

- Architects
 - Planners
 - Interior Design
- 220 NE 11th St.
Boca Raton FL 33432
- 416 SE 5th St.
Delray Beach FL 33483

P: 561 - 749 - 1234

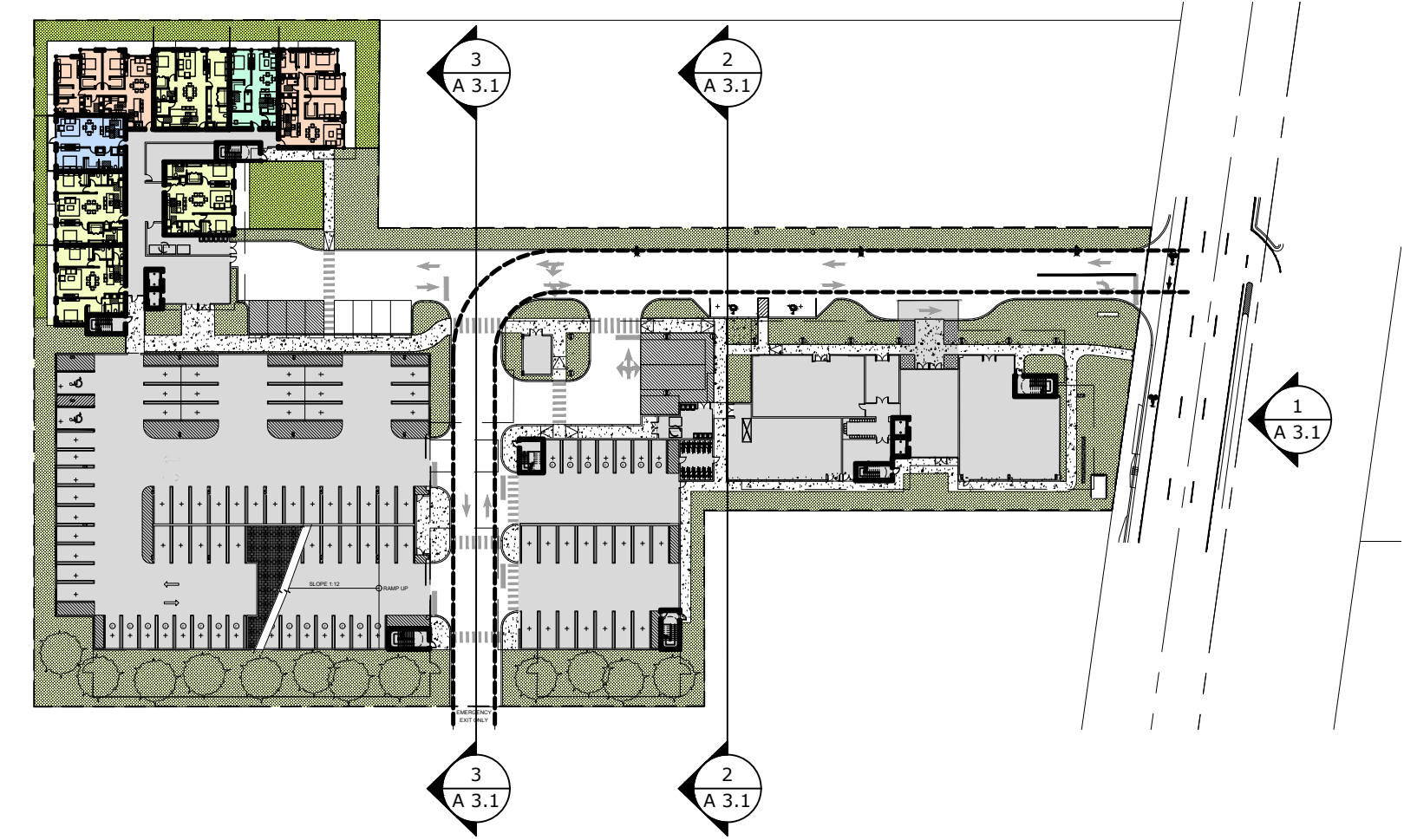
GREG MADSEN - AR92411

North Facade:

Tier A - Establishes a human-scale interface. It combines blind, petrous walls with large storefront openings, grounding the building and providing visual weight.

Tier B - Generous terraces with glass railings, articulated in white stucco and accents of wood grain cladding. Provide shade, reduce solar gain, and contribute to a lightweight, open expression.

Tier C - Shift in vertical scale, housing double-height apartments. The increased distance between the top terrace and the eyebrow line emphasizes the change in proportion and highlights the roof trim. Reinforces the building's skyline presence while maintaining a sense of lightness.



KEYPLAN - GROUND LEVEL
N.T.S.

FINISH KEYNOTES

01	SMOOTH STUCCO - PAINT 1
02	SMOOTH STUCCO - PAINT 2
03	WOOD GRAIN ALUMINUM BATT FACADE - SAMPLE IMAGE 1
04	WOOD GRAIN ALUMINUM VERTICAL SLATS - SAMPLE IMAGE 2
05	ALUMINUM WINDOWS-POWDER COATED DARK GREY - PAINT 3. IMPACT RESISTANT GLAZING WITH 85% LIGHT TRANSMITTANCE AND 14% LIGHT REFLECTANCE, INTERIOR AND EXTERIOR.
06	GLASS - ALUMINUM RAILING
07a	STEEL PERFORATED PANEL, 50% OPENING - SAMPLE 3
07b	STEEL PERFORATED PANEL, 30% OPENING - SAMPLE 4
07c	OPENING IN STEEL PERFORATED PANEL FACADE
08	ALUMINUM STOREFRONT WITH INTEGRATED DOORS-POWDER COATED DARK GREY - PAINT 3. IMPACT RESISTANT GLAZING WITH 65% VISIBLE LIGHT TRANSMITTANCE AND 14% VISIBLE LIGHT REFLECTANCE, INTERIOR AND EXTERIOR
09	ALUMINUM SLIDING GLASS DOORS-POWDER COATED BLACK, IMPACT RESISTANT GLAZING WITH 65% VISIBLE LIGHT TRANSMITTANCE AND 14% VISIBLE LIGHT REFLECTANCE, INTERIOR AND EXTERIOR.

FINISHES AND COLORS

THE SATORI
4211 N FEDERAL HWY
POMPANO BEACH, FL 33064

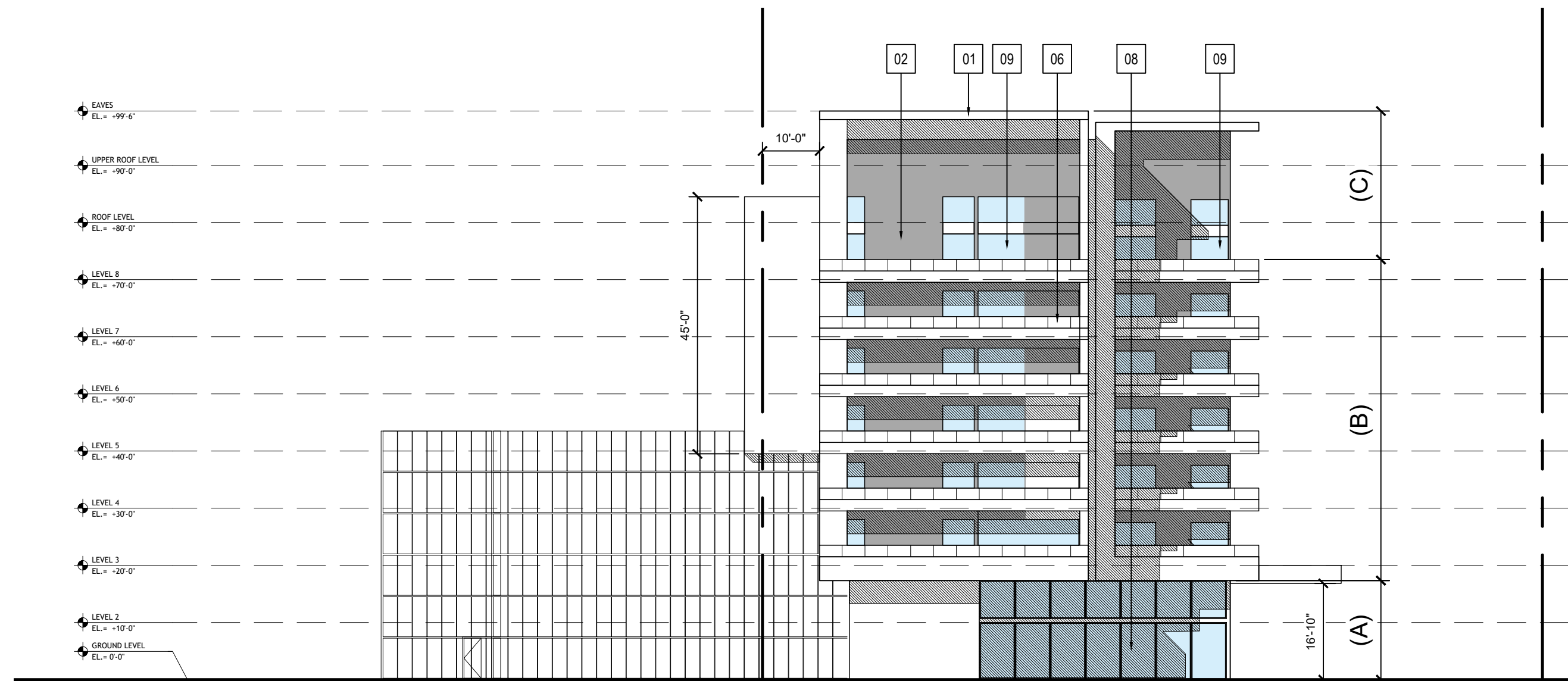
SUBMITTALS:

ELEVATIONS

A3.1

PROJECT NUMBER: 25-008

SECTION
SCALE: 1"=20'-0"



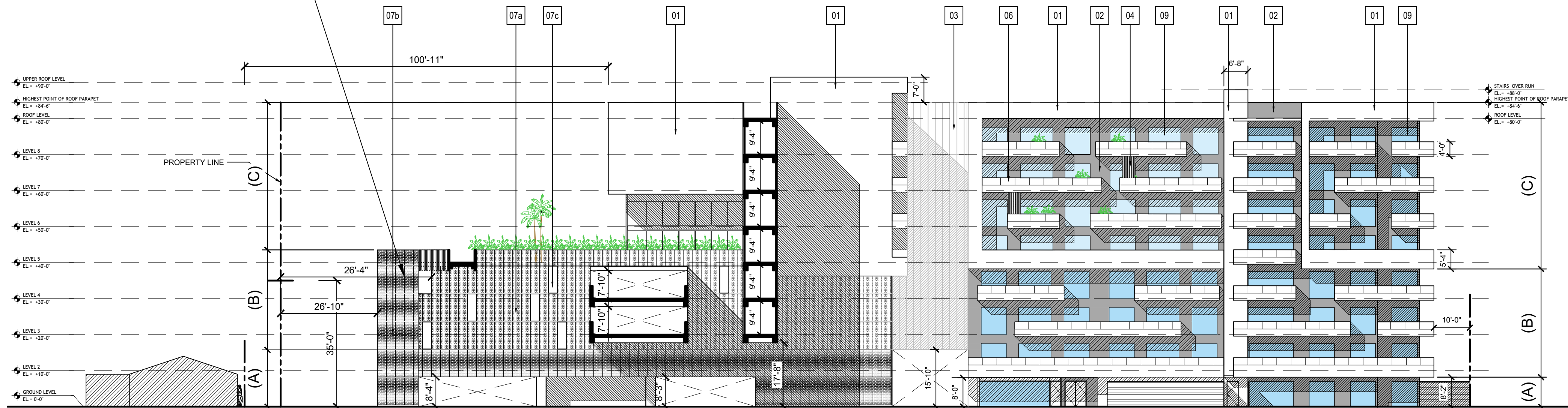
South Facade:

Tier A - features denser panels with approximately 30% open area, grounding the facade and providing privacy.

Tier B - transitions to lighter panels with 50% openness, incorporating vertical slits and layered transparency.

Tier C - returns to the residential language, with terraces and glass railings echoing the middle tier of the primary façade, separated from the adjacent 1-family houses with a 100 ft setback.

SECTION
SCALE: 1"=20'-0"



SECTION
SCALE: 1"=20'-0"